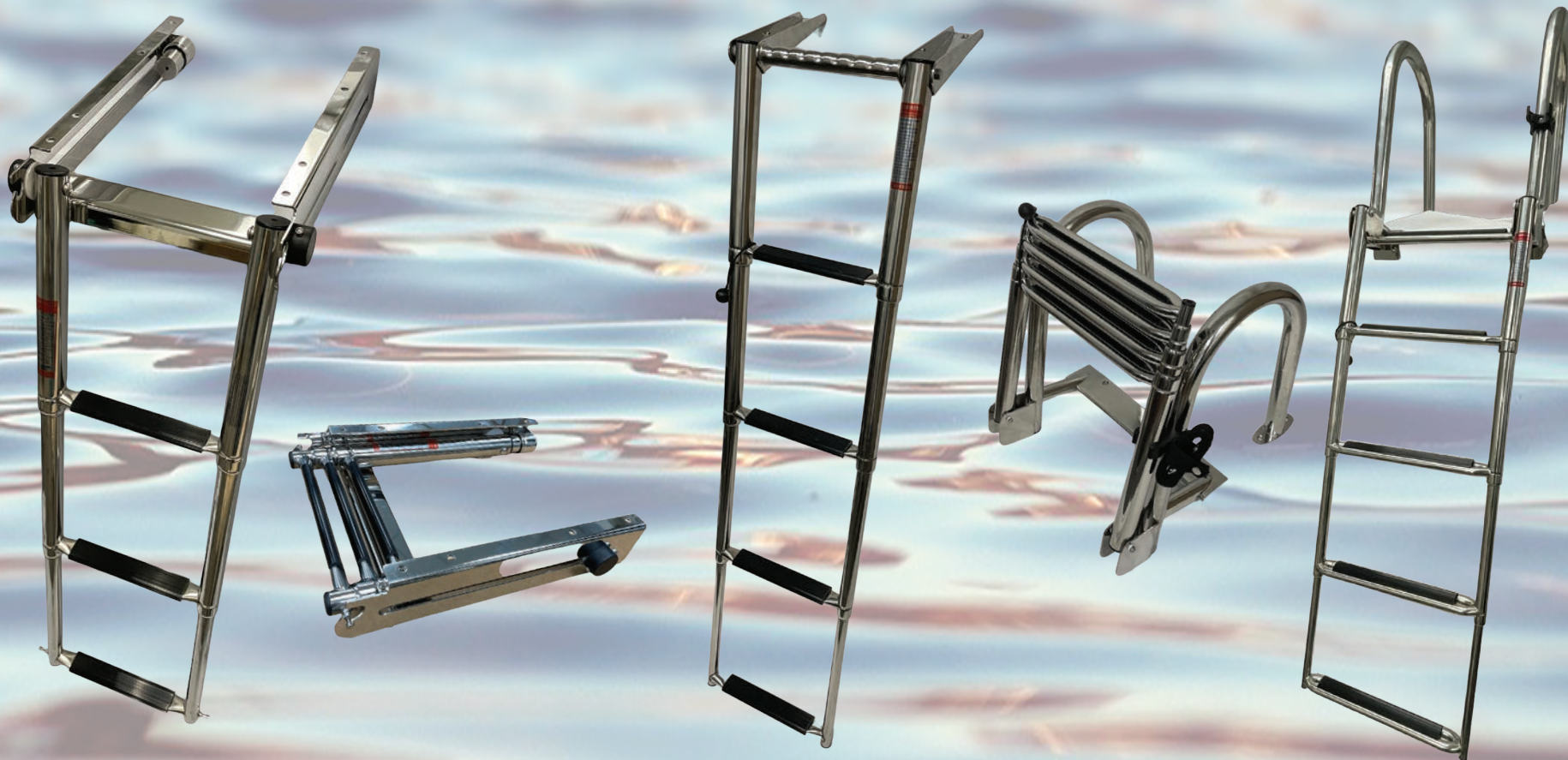




*A Step Above*



**MARINE LADDERS & ACCESORIES 2025**



**MARINE CATALOG 2025**

[www.WakullaMarine.com](http://www.WakullaMarine.com)



## **Your Commodity and Customized Parts Supplier**

**Our goal is to be a valuable partner to our customers by providing the cost benefits of engineering capability, off-shore and in-house manufacturing, total quality control, reliable service, local warehousing and inventory management.**

### **PRODUCT WARRANTY**

WAKULLA MARINE INC. ("Wakulla") warrants the original purchaser that our products are free of defects in workmanship and materials under normal and proper usage for 2 years for the ladders and hardware items, 5 years for the pedestals, 1 year for the upholstery and cushions and 5 years for boat seat frames (the "Warranty"). The Warranty is subject to the additional terms, conditions and limitations.

The warranty is voided if the product has been damaged by abuse, misuse or neglect, accident, unauthorized modifications, improper installation, or service, misapplication or other use not arising out of defects in workmanship or materials.

**8838 Frost Avenue  
Berkeley, MO 63134  
Phone: 314-546-5001  
Email: [customer@wakullamarine.com](mailto:customer@wakullamarine.com)  
[www.wakullamarine.com](http://www.wakullamarine.com)**

**F.O.B. St. Louis, MO  
Terms: Net 30 days**



### **1750TMX2**

2-STEP TELESCOPING DROP LADDER  
Overall height: 23.5" Width: 11.38"  
Gudgeon length: 7" Weight: 4lbs.

### **1750TMX3**

3-STEP TELESCOPING DROP LADDER  
Overall height: 34.5" Width: 12"  
Gudgeon length: 7" Weight: 6.2lbs.

### **1750TMX4**

4-STEP TELESCOPING DROP LADDER  
Overall height: 44.5" Width: 16"  
Gudgeon length: 9" Weight: 8.6lbs.

- Fold out and over, telescope down
- Stainless steel steps, non-skid plastic tread
- 400 lb capacity
- Mounting hardware not included

### **1750TMX3S**

3-STEP SLIDE MOUNT LADDER  
Overall height 33": Width: 12"  
GSlide mount: 10" Weight: 6.6lbs.

### **1750TMX4S**

4-STEP SLIDE MOUNT LADDER  
Overall height: 45.5" Width: 10.5"  
GSlide mount: 10" Weight: 8.8lbs.

- 400 lb capacity
- Mounting hardware included

### **1750ZQB2**

2-STEP OVER PLATFORM W/ HAND GRIP TELESCOPING LADDER  
Length: 24" Stowed: 13" Width: 11.5"

### **1750ZQB3**

3-STEP OVER PLATFORM W/ HAND GRIP TELESCOPING LADDER  
Length: 34" Stowed: 15" Width: 12"

### **1750ZQB4**

4-STEP OVER PLATFORM W/ HAND GRIP TELESCOPING LADDER  
Length: 46" Stowed: 16" Width: 12.5"

- Fold out and over, telescope down
- Stainless steel steps, non-skid plastic tread
- 400 lb capacity
- Mounting hardware not included



## UNDER MOUNT DROP LADDERS



### **1750FQG2**

2-STEP UNDER PLATFORM  
SLIDING LADDER  
Height: 23.5" Width: 11.5" Weight: 5.5 lbs

### **1750FQG3**

3-STEP UNDER PLATFORM  
SLIDING LADDER  
Height: 34.5" Width: 12" Weight: 8 lbs

### **1750FQG4**

4-STEP UNDER PLATFORM  
SLIDING LADDER  
Height: 45.5" Width: 12.5" Weight: 12 lbs

### **1750FQGS2**

2-STEP UNDER PLATFORM SLIDING LADDER  
Height: 23.5" Width: 11.5" Weight: 5.5 lbs

### **1750FQGS3**

3-STEP UNDER PLATFORM SLIDING LADDER  
Height: 34.5" Width: 12" Weight: 8 lbs

### **1750FQGS4**

4-STEP UNDER PLATFORM SLIDING LADDER  
Height: 45.5" Width: 12.5" Weight: 11 lbs

- Ideal for under swim platforms or under pontoon boat deck, side or bow
- Steps telescope down easily
- Electropolished Stainless steel 316
- 400 lb capacity
- Mounting hardware not included

### **1750FCB3**

3-STEP LOCKING SIDE MOUNT  
TELESCOPING LADDER  
Length (Deployed): 35" Length (Stowed): 17"  
Width: 12" Depth: 15" Weight: 14 lbs.

### **1750FGAB3**

3-STEP UNDER PLATFORM  
SLIDING LADDER  
Height: 33.5" Width: 11.5" Weight 10 lbs



### 1750CAT

#### 4-STEP PREMIUM STAINLESS LADDER W/ EXTRA WIDE STEP

Height: 62" Handle Height: 17"  
Width: 17" Depth: 11" Weight: 18.5 lbs

- Electropolished stainless steel 316 tubing
- Telescopes and flips up
- Quick release mounting brackets
- 400lb. capacity
- Mounting hardware not included

### 1750CAS

#### 5-STEP TELESCOPING LADDER 1.5" STAINLESS STEEL TUBING

Height: 62" Handle Height: 18"  
Depth: 14.5" Width: 17"  
Weight: 19.5 lbs

- Telescopes and flips up
- 400lb. capacity
- Mounting hardware not included

### 17501313

#### 4-STEP TELESCOPING LADDER 1.5" STAINLESS STEEL TUBING

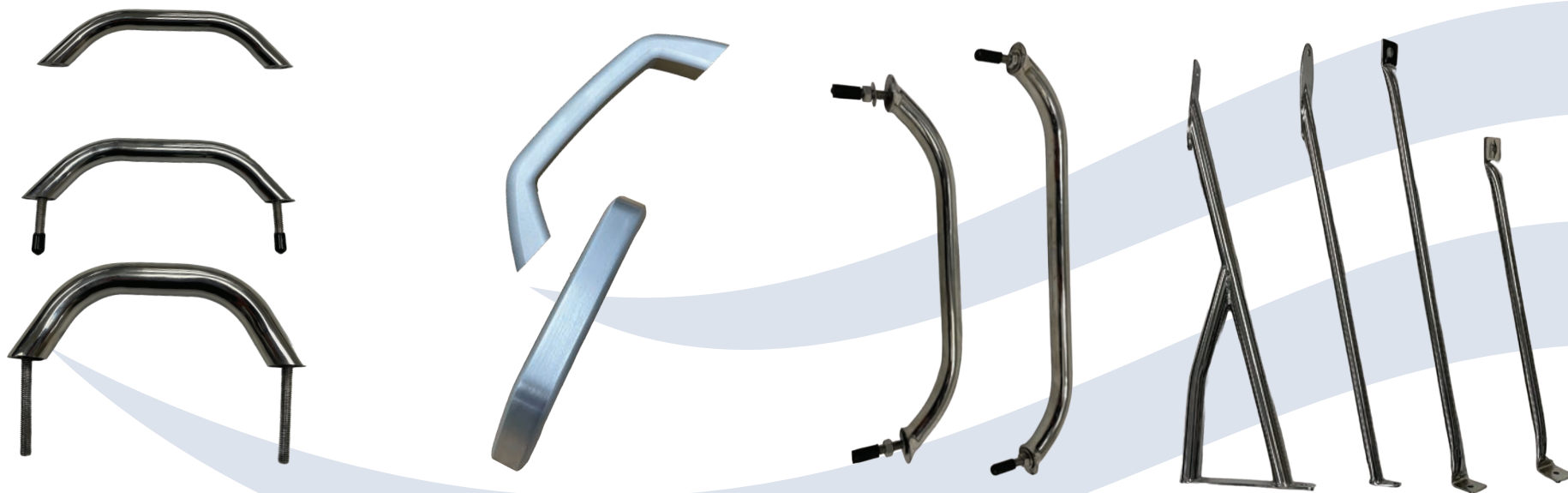
Height: 52" Width: 10"  
Weight: 9.5 lbs

### 20010002

#### STAINLESS STEEL GATE

- Custom made
- Stainless steel 316 tubing
- Mounting hardware not included

## HANDRAILS & BRACKETS



NOTE: CC = Stud or Hole Center to Center Distance

### 3/8" TUBE SS316 GRAB RAIL

**16334119**

Length: 8.5" CC: 7.5" Countersink

**19334129**

Length: 8.5" CC: 7.5" Stud: 1.5"

### 1/2" TUBE SS316 GRAB RAIL

**19334186**

Length: 10" CC: 8.5" Stud: 2"

**16334187**

Length: 7.5" CC: 6.25" Stud: 1"

**19334188**

Length: 10" CC: .5" Stud 1"

**19334189**

Length: 8.25" CC: 7" Stud: 1"

**19334190**

Length: 8.25" CC: 7" Stud: 2"

### GRAB RAIL ALUMINUM BILLET

**16335008**

Length: 8.5" CC: 7.5" Countersink

**16335010**

Length: 10.5" CC: 9.5" Countersink

**16335012**

Length: 12.5" CC: 11.5" Countersink

### FLANGED STAINLESS STEEL HANDRAIL

**1633FZ16**

16" HANDRAIL STAINLESS STEEL

**1633FZ14**

14" HANDRAIL STAINLESS STEEL

**1633FZ12**

12" HANDRAIL STAINLESS STEEL

**1633FZ10**

10" HANDRAIL STAINLESS STEEL

**1633FZ08**

8" HANDRAIL STAINLESS STEEL

STAINLESS STEEL 316  
5/16"-18UNC STUD in 2"

### 3/8" TUBE SS316 FENCE BRACE

**20020013**

13" FENCE BRACE - Bended

**20020017**

17" FENCE BRACE - Bended

### 1/2" TUBE SS316 FENCE BRACE

**20030013**

13" FENCE BRACE - Bended

**20030017**

17" FENCE BRACE - Bended

**20031017**

17" FENCE BRACE - Oval

**20032013**

13" FENCE BRACE - Premium

**20032017**

17" FENCE BRACE - Premium

**ABYC H-31 CERTIFIED**



**18600912**

9.5"-12" AIR ADJUSTABLE PEDESTAL  
W/ SWIVEL & SLIDER  
9" BASE

**18601115**

11"-15" AIR ADJUSTABLE PEDESTAL  
W/ SWIVEL & SLIDER  
9" BASE

- 2 -7/8" Diameter Post

**18502007**

7" FIXED HEIGHT PEDESTAL  
W/ SWIVEL & SLIDER, 9" BASE

**18502009**

9" FIXED HEIGHT PEDESTAL  
W/ SWIVEL & SLIDER, 9" BASE

**18502010**

10" FIXED HEIGHT PEDESTAL  
W/ SWIVEL & SLIDER, 9" BASE

**18502011**

11" FIXED HEIGHT PEDESTAL  
W/ SWIVEL & SLIDER, 9" BASE

**18502012**

12" FIXED HEIGHT PEDESTAL  
W/ SWIVEL & SLIDER, 9" BASE

- 2-7/8" Diameter Post

**18700154**

15" FINISHING POST W/ SWIVEL  
9" FLOOR FLUSHING BASE  
• Removable Post

**18602001**

7"x 7" SS SWIVEL

**18602002**

7"x 7" SS BASE

**18602013**

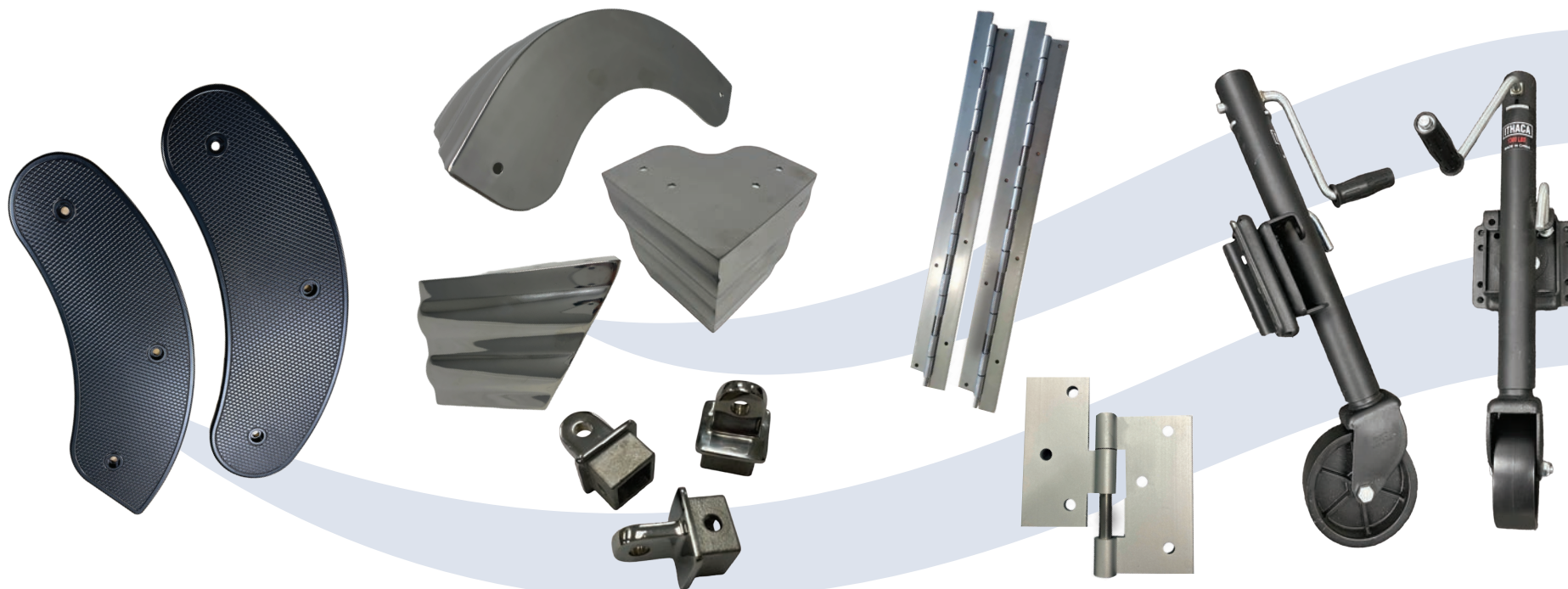
13" KINGPIN PEDESTAL

**18602025**

25" KINGPIN PEDESTAL



## MARINE ACCESSORIES



### AL-CORNER

ALUMINUM BILLET CNC CUT CORNER

### SS-CORNER-B

STAINLESS STEEL 304 CORNER, BOW

### SS-CORNER-R

STAINLESS STEEL 304 CORNER, REAR

### WM8001

1" BIMINI EYE END, SS316

### WM8002

1-1/4" BIMINI EYE END, SS316

### WM001

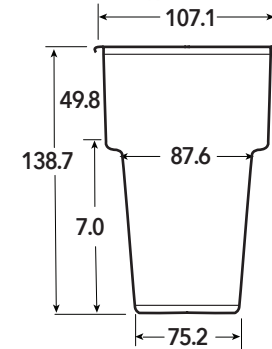
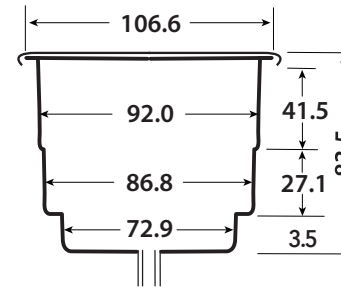
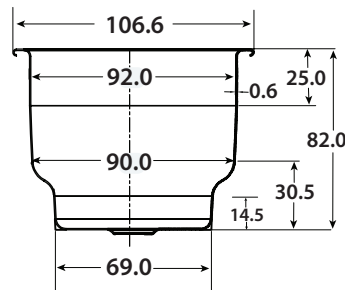
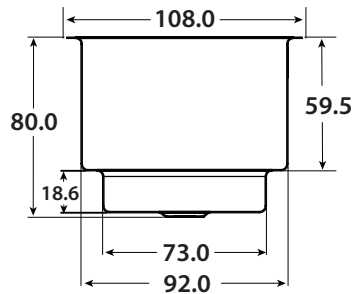
LIFT GATE HINGE  
17.750" x 1.168"  
Four Hole

### WM0001

LIFT GATE HINGE  
2.750" x 3.0"

### ITHACA-TJ-1300

TONGUE JACK, 12" TRAVEL,  
1300 lbs CAPACITY  
BLACK POWDER COATED



## WM101 (1014)

Two step polished SS316  
with drain and pad.

Also available in additional sizes

**WM102 (1016)**

**WM103 (1007)**

**WM104 (1008)**

**WM105 (21018)**

**WM106 (21937)**

Polished  
SS304

## WM107 (1020)

Two step polished SS304  
with drain, pad and gasket

## WM201

Black plastic cup with polished  
SS rim

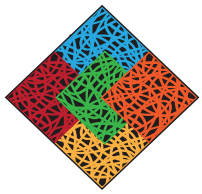
## WM301 (YETI CUP)

Polished SS304 with drain  
and pad

**Wakulla Marine offers quality  
marine grade furniture for OEM  
and aftermarket customers.**







**Wakulla Mat**<sup>TM</sup>

## SPAGHETTI MAT



Full rolls from our factory are available in many exciting and vibrant colors.



With our custom cut capabilities, we can design and produce custom mats with your company logo, theme artwork or anything you can think of.



Custom marine flooring and storage liners cut to your boats' specifications.





[www.WakullaMarine.com](http://www.WakullaMarine.com)





**Wakulla Marine**  
8838 Frost Avenue  
Berkeley, MO 63134  
314-546-5001  
[customer@wakullamarine.com](mailto:customer@wakullamarine.com)